

Client _____ Quantity _____
Project _____ Position _____

FUN 600

Model: F60/60FTG/L/T

Cod: MP01372111001

Market: Extra UE



Technical data

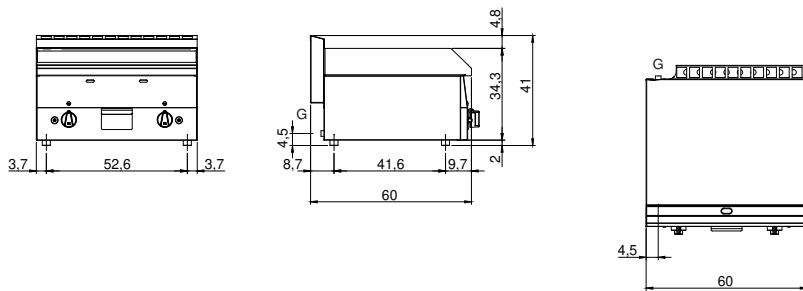
Modularity:	Top
Dimension (mm):	600x600x300
Total gas power (Kcal/h):	8943
Total gas power (kW):	10,4
Cooking zone dimensions 1 (LxD mm):	596x470
Gas connection:	1/2"
Net volume (m3):	0,108
Packing dimensions (mm):	676x695x630
Gross weight (kg):	51
Gross volume (m3):	0,296

Features

Working top:	Made of AISI 304 stainless steel with a thickness of 8/10 mm
Material of plate:	Mild steel
Plate finish:	Smooth
Knobs:	Knobs are made from a sturdy heat-resistant polymer blend
Flue:	Made in a single piece, which facilitates the alignment of the modules
Liquid collection container:	Removable and dishwasher safe
Plate:	In mild steel
Upright Splash guard:	On two sides
Kit Gas:	Natural gas conversion kit 30/50 m/bar (tested with natural gas G20)

Gas griddle with smooth plate Top with deep funnel in AISI 304 stainless steel; covering in AISI 430 stainless steel thickness 8/10; bottoms and internal parts in anti-corrosion material (aluminised sheet metal). Cooking hotplate in steel with high thermal conductivity for even temperature distribution. Equipped with two independent cooking zones. Provided with front groove, extractable drawer for grease collection and splash guard on three sides. Steel burners with pilot burners with piezoelectric ignition. Gas supplied by means of safety valve with thermocouple. 2 burners x 5.2 kW/ea. - Total power 10.4 kW - Plate dimensions 595x470 mm.

Technical draw



G: Gas connection 1/2"