

Client \_\_\_\_\_ Quantity \_\_\_\_\_  
Project \_\_\_\_\_ Position \_\_\_\_\_

## FUN 600

**Model:** F60/60GRLG/T

**Cod:** MP01452111000

**Market:** Extra UE



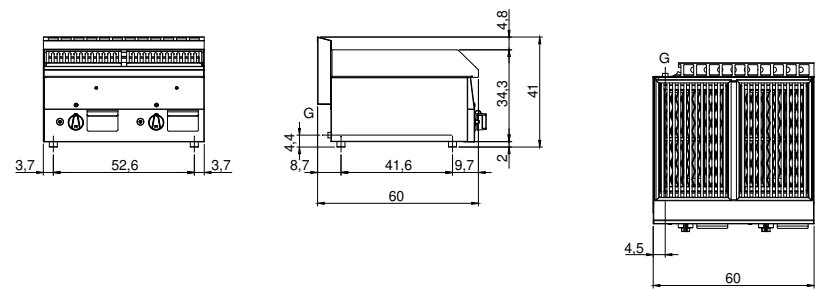
### Technical data

|  |                      |
|--|----------------------|
| <b>Modularity:</b>                         | Top                  |
| <b>Dimension (mm):</b>                     | 600x600x300          |
| <b>Total gas power (Kcal/h):</b>           | 9459                 |
| <b>Total gas power (kW):</b>               | 11                   |
| <b>Cooking zone dimensions 1 (LxD mm):</b> | n°1 681.058.00 (270x |
| <b>Cooking zone dimensions 2 (LxD mm):</b> | n°1 681.058.00 (270x |
| <b>Gas connection:</b>                     | 1/2"                 |
| <b>Net volume (m3):</b>                    | 0,108                |
| <b>Packing dimensions (mm):</b>            | 376x695x596          |
| <b>Gross weight (kg):</b>                  | 59,3                 |
| <b>Gross volume (m3):</b>                  | 0,156                |

### Features

|                                     |  |
|-------------------------------------|--|
| <b>Grill:</b>                       | In cast iron   |
| <b>Working top:</b>                 | Made of AISI 304 stainless steel with a thickness of 8/10 mm           |
| <b>Knobs:</b>                       | Knobs are made from a sturdy heat-resistant polymer blend              |
| <b>Flue:</b>                        | Made in a single piece, which facilitates the alignment of the modules |
| <b>Liquid collection container:</b> | Removable and dishwasher safe  |
| <b>Upright Splash guard:</b>        | On two sides   |
| <b>Kit Gas:</b>                     | Natural gas conversion kit 30/50 m/bar (tested with natural gas G20)   |

Technical draw



G: Gas connection 1/2"